



Eric Garcetti
Mayor



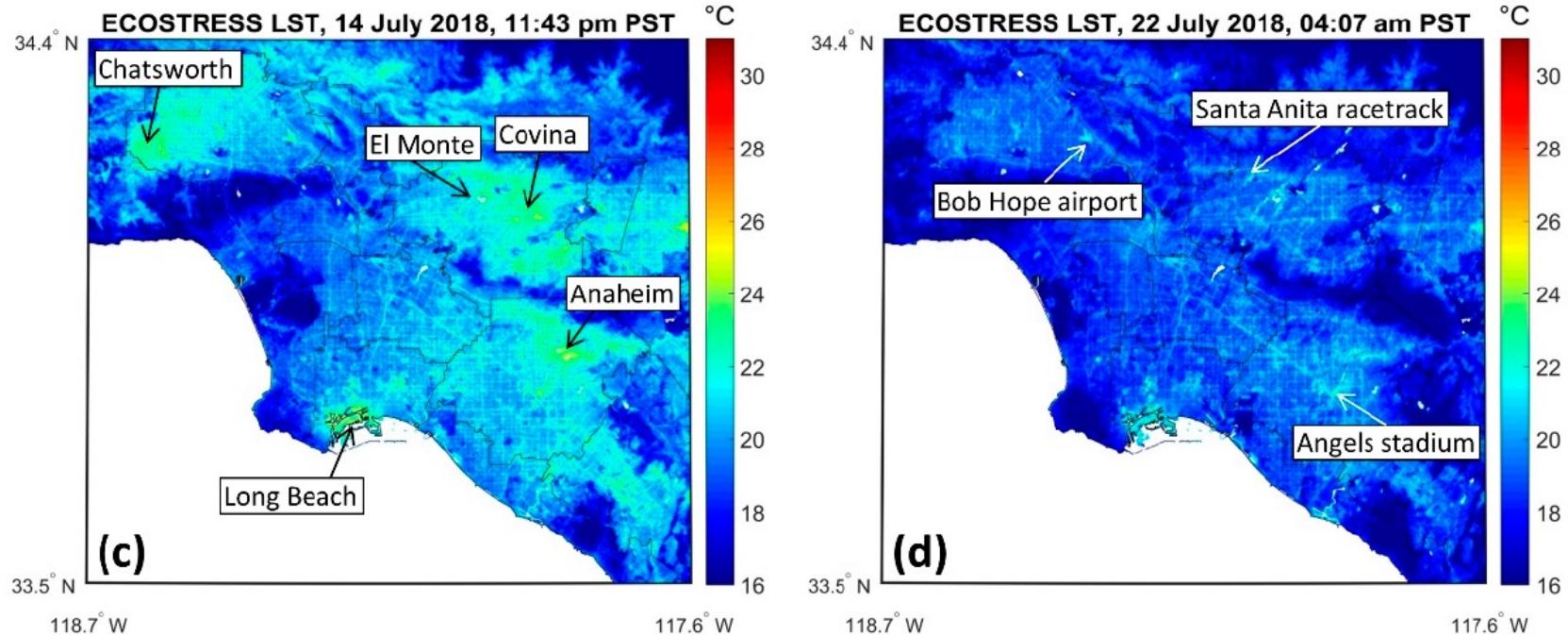
Kevin James
Board President



Presented by Greg Spotts
Chief Sustainability Officer

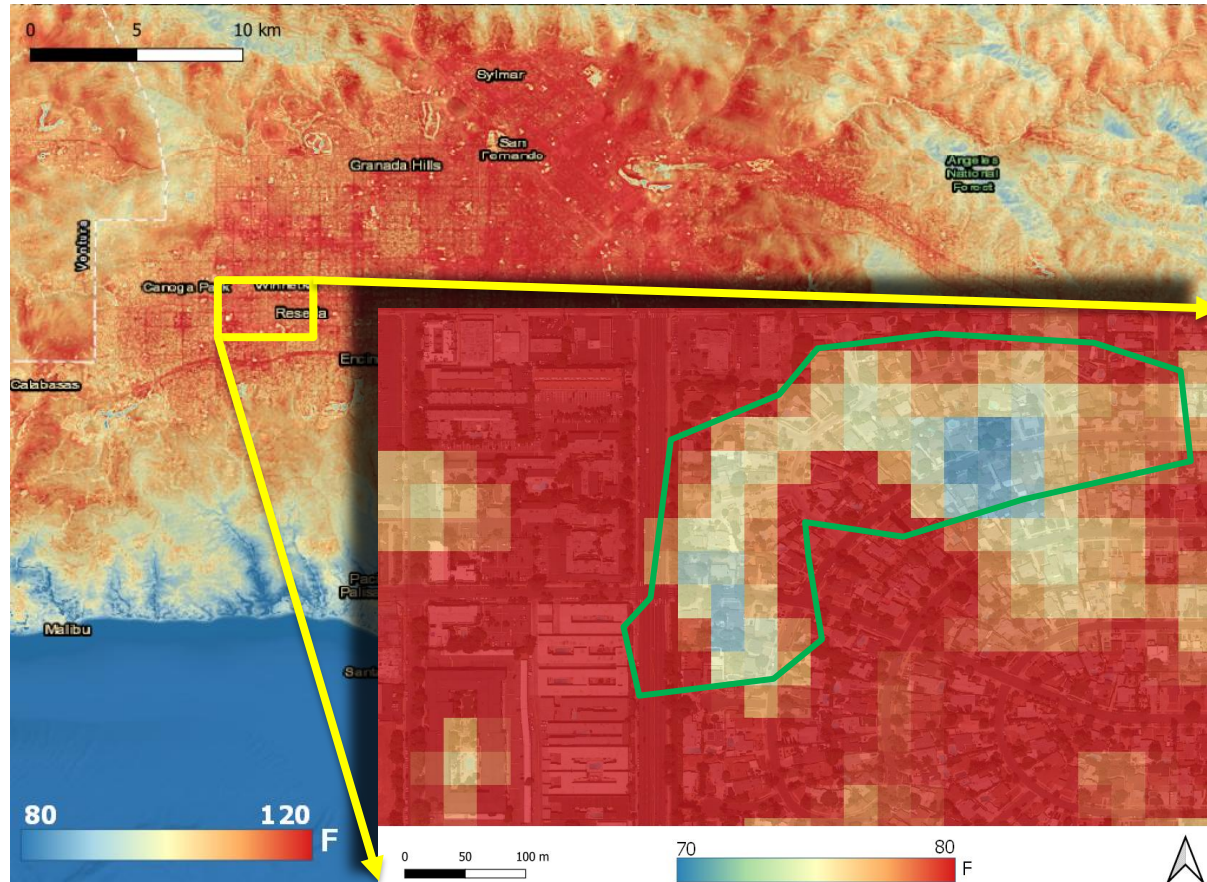


On summer nights, you can see LA's warm roads and airports on satellite thermal images



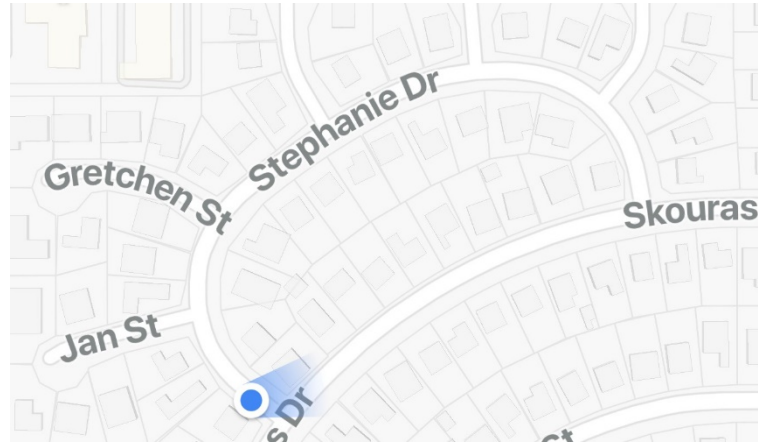
Source: Glynn Hulley, JPL/NASA ECOSTRESS

Observed: a “Cool Crescent” in the Winnetka neighborhood, SF Valley

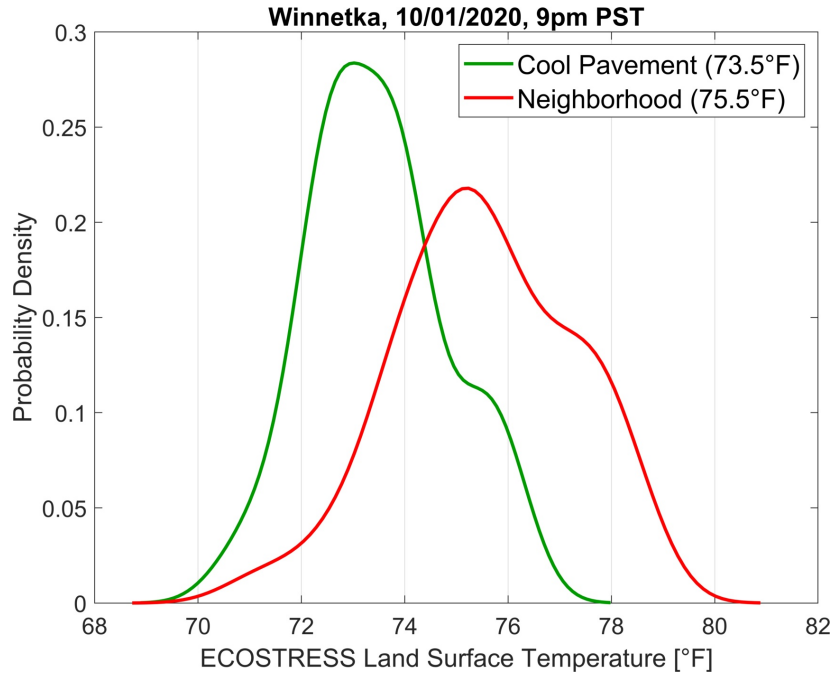
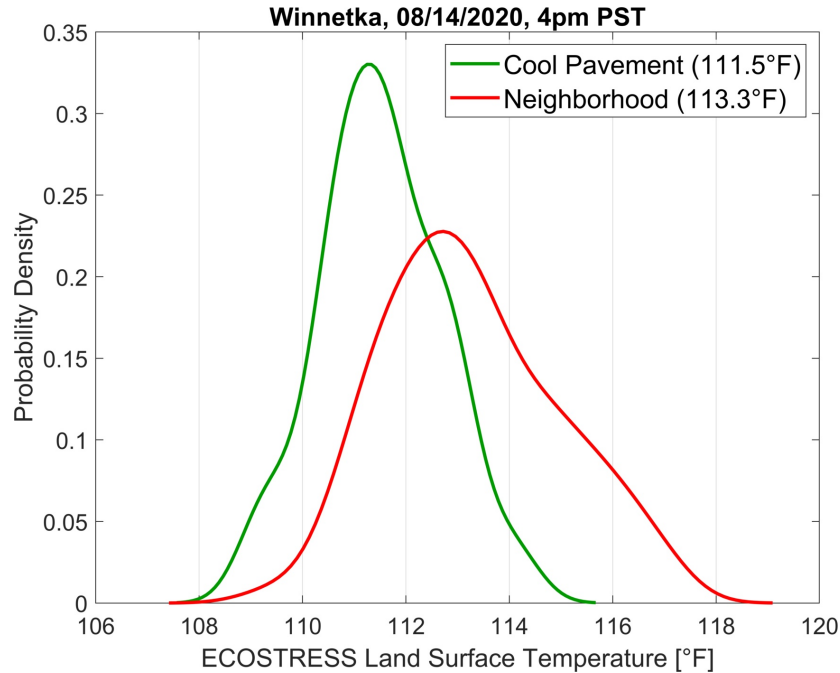


ECOSTRESS Land Surface Temperature 08/14/2020, 4pm PST (Source: Glynn Hulley, JPL/NASA)

The Cool Crescent is our first Neighborhood Cool Pavement Project on Stephanie Drive and adjacent cul-de-sacs: 11 Residential Blocks



Effect of cool pavement is $\sim 2^\circ\text{F}$ cooling with respect to rest of the neighborhood (day and night)



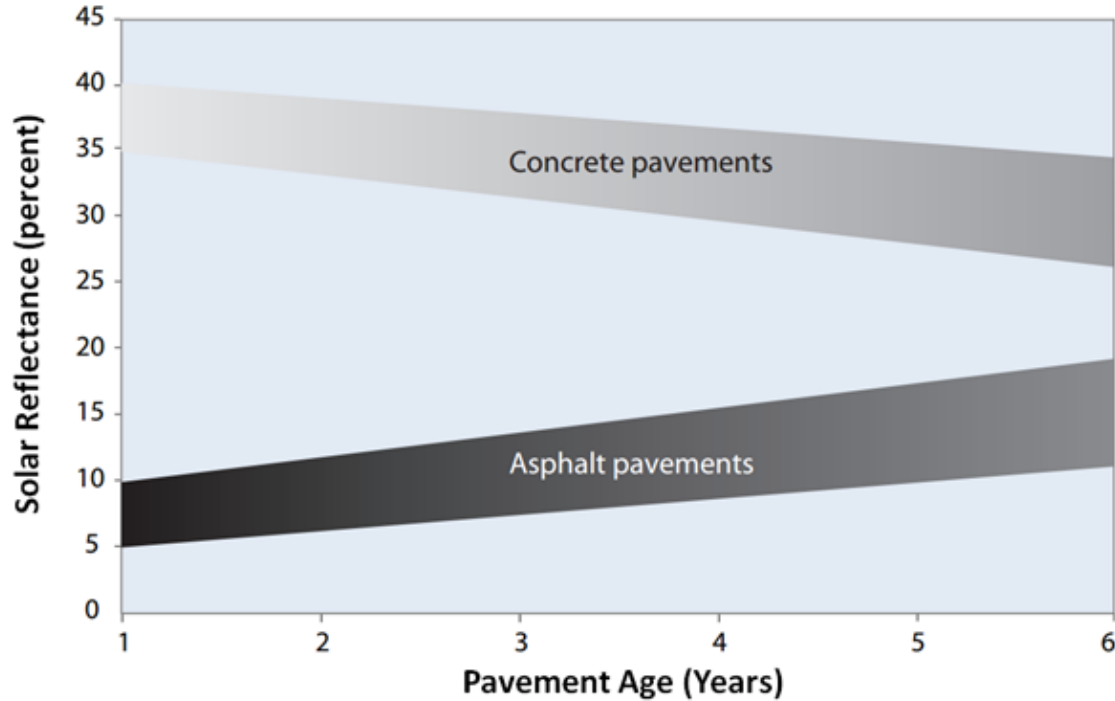
Cool pavement region = all pixels within 100m of cool pavement (11 blocks: Stephanie Dr + 5 cul de sacs)

Neighborhood = all remaining pixels in Winnetka neighborhood

Source: Glynn Hulley, JPL/NASA ECOSTRESS

Solar Reflectance: Asphalt vs Concrete

Asphalt fades over time, while concrete gets dirty



Cool Pavement Coating:
a thin gray coating can
make an asphalt
roadway reflect the sun
like a concrete roadway