



Eric Garcetti
Mayor



Greg Good
Board President

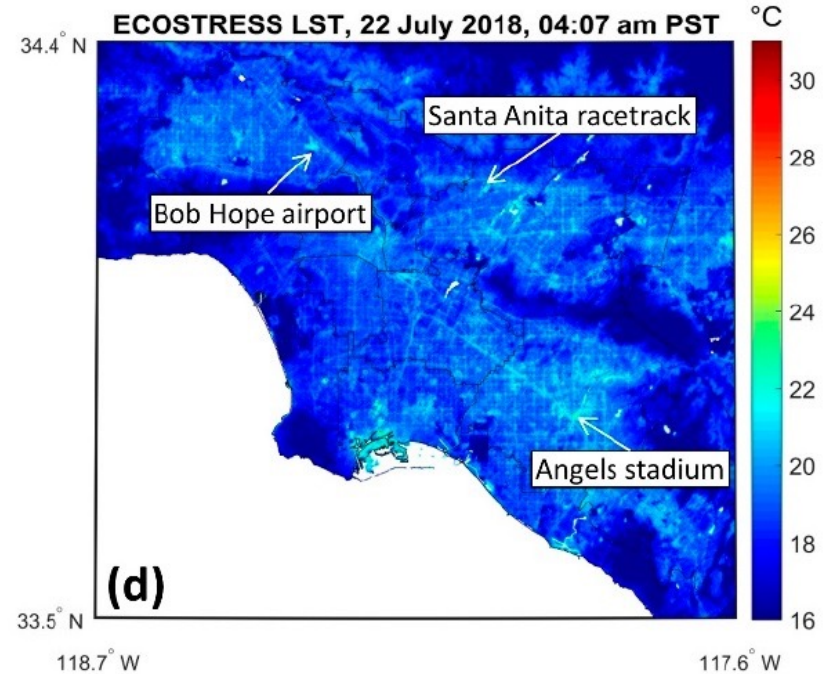
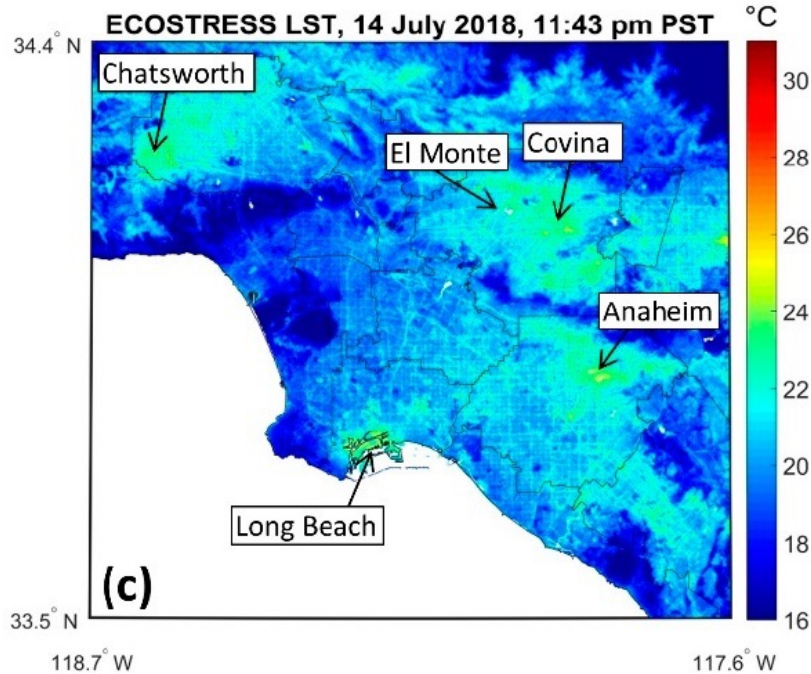
COOL^o STREETS LA

COOLING LA'S NEIGHBORHOODS

Presented by Greg Spotts
Chief Sustainability Officer



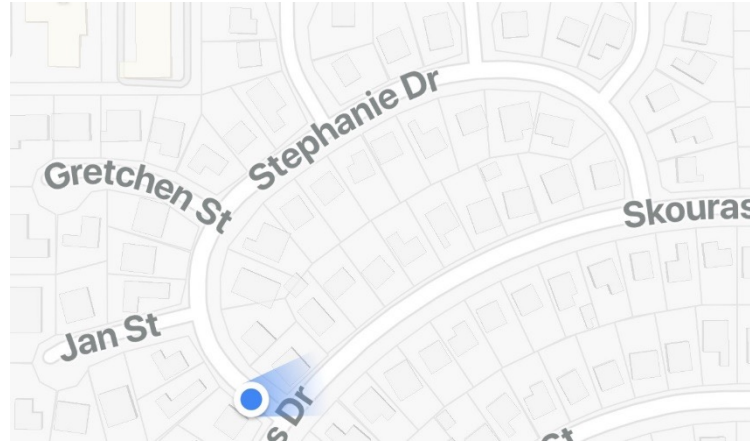
At night, you can see LA's warm roads and airports on satellite thermal imagery



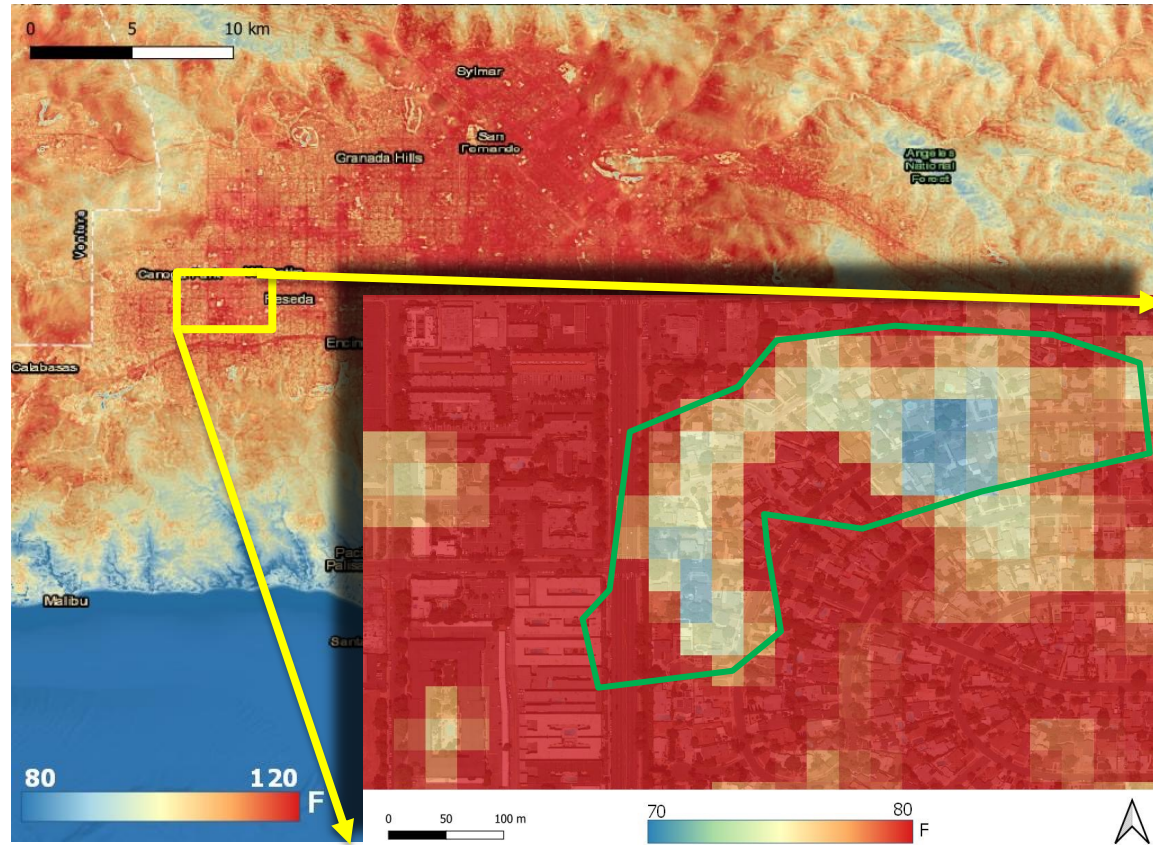
2017: StreetsLA installed cool pavement coating on one city block in each of the 15 Council Districts



May 2019: First Neighborhood-Level Cool Pavement Project in Winnetka Cool Seal on 11 Residential Blocks along the crescent of Stephanie Drive



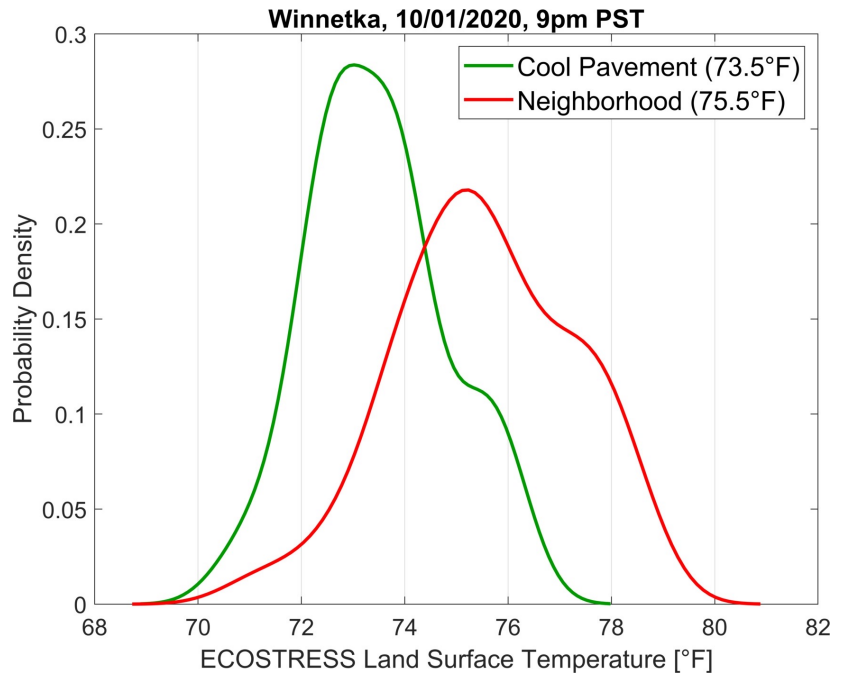
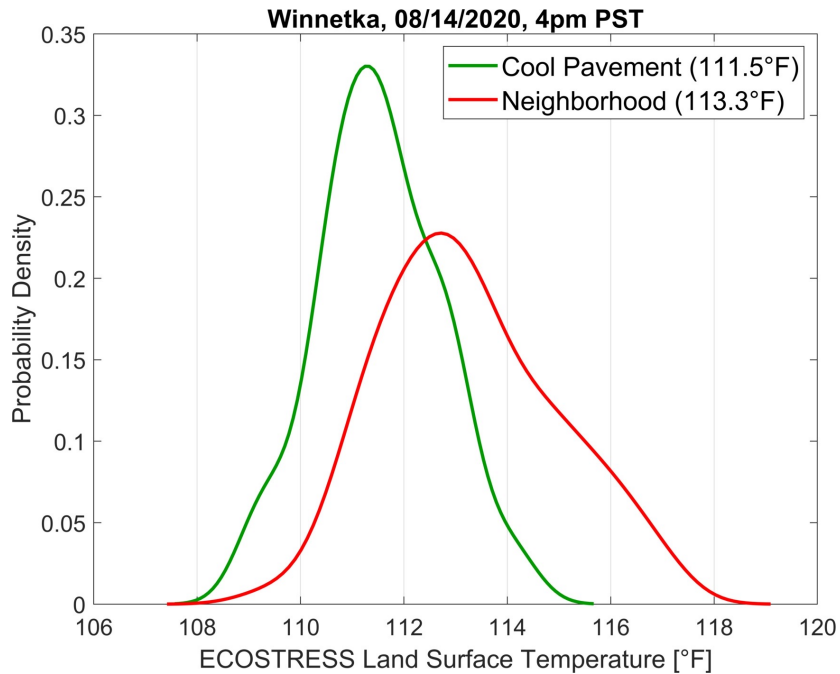
Cooling Effects of the Winnetka Project are visible from Space



ECOSTRESS thermal camera aboard International Space Station:
Land Surface Temperature 08/14/2020, 4pm PST (Source: Glynn Hulley, JPL/NASA)

Cool pavement = all pixels within 100m of cool pavement streets branching off Stefanie Dr
Neighborhood = all remaining pixels in neighborhood block

Effect of cool pavement is $\sim 2^\circ\text{F}$ cooling with respect to rest of the neighborhood (day and night).



Next Phase: 200 city blocks of cool pavement coating and planting of 1900 shade trees across 8 underserved neighborhoods

- Red-shaded neighborhoods have the highest heat risk, lowest tree canopy, and highest risk from environmental pollution (CalEnviroScreen)
- Labeled neighborhoods were selected by StreetsLA as best candidates for multi-faceted urban cooling projects in FY 21-22 (assistance from Trust for Public Land, Climate Smart Cities mapping tool)

